



THE 5



LEADING WITH
STYLE.



FACE FORWARD.

EXTERIOR COLOURS.

■ Standard equipment □ Optional equipment



□ Non-metallic 300 Alpine White¹



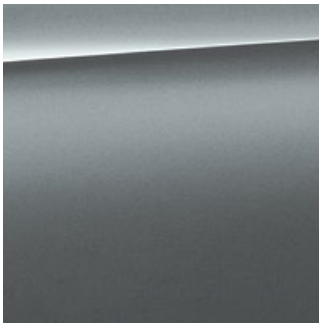
■ Non-metallic 668 Black



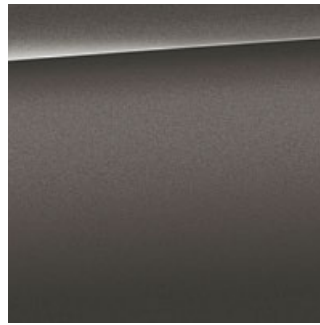
□ Metallic A96 Mineral White



□ Metallic A83 Glacier Silver



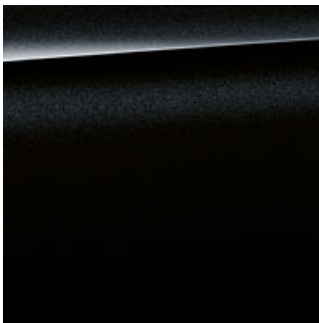
□ Metallic C2Y Bluestone²



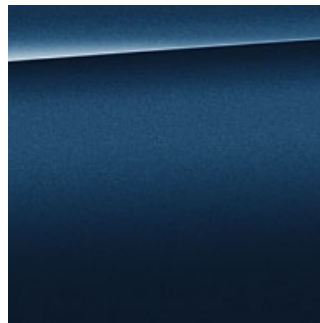
□ Metallic C3E Bernina Grey Amber Effect²



□ Metallic A90 Sophisto Grey Brilliant Effect²

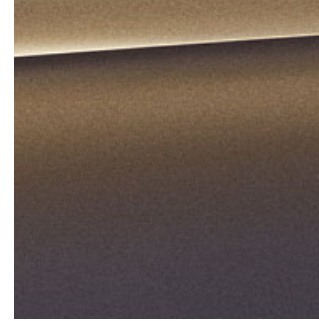


□ Metallic 475 Black Sapphire²

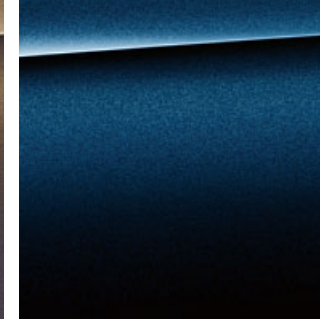


□ Metallic C1M Phytonic Blue²

BMW INDIVIDUAL



□ BMW Individual C5E Alvide Grey metallic²

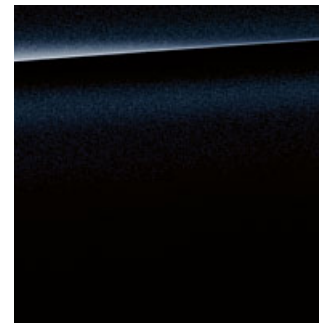


□ BMW Individual C3Z Tanzanite Blue metallic²



□ BMW Individual X1C Aventurine Red metallic²

M SPORT PACKAGE



□ Metallic 416 Carbon Black²

[Colour samples] These colour samples are intended as an initial guide to the colours and materials available for your BMW. However, experience has shown that printed versions of paint, upholstery and interior trim colours cannot in all cases faithfully

reproduce the appearance of the original colour. Please discuss your preferred colour choices with your BMW partner or in your dealership. There you can also see original samples and be assisted with special requests.

¹ Also available as standard for the M Sport package.

² Also optionally available for the M Sport package.



YOUR NEW SPEED DATING APP.

DOWNLOAD NOW THE BMW BROCHURES APP FROM YOUR APP STORE AND DISCOVER DRIVING PLEASURE!



BMW 530e SALOON WITH M SPORT PACKAGE:

Fuel consumption in l/100 km (combined, PHEV weighted): 2.0 – 1.4

CO₂ emissions in g/km (combined, PHEV weighted): 46 – 32

Energy consumption in kWh/100 km (ECAC weighted): 18.2 – 16.2

Provisional figures, awaiting official confirmation.

The data for fuel consumption, CO₂ emissions and energy consumption are determined in accordance with the measurements processes as defined by European Regulation (EU) 715/2007 in the applicable version. Data refer to a vehicle with base-level equipment in Germany, and the ranges account for differences according to the selected wheel and tyre size and the optional equipment. For these vehicles, values other than those specified here may apply for the assessment of taxes and other vehicle-related charges that are (also) based on CO₂ emissions. Version 03/16/2020

The models illustrated in this medium show the equipment and configuration options (standard and optional) for vehicles produced by BMW AG for the German market. Some of the equipment features shown or described here are available as optional equipment at an extra charge. The availability of some equipment features depends on engine variants or additional options. Alterations in standard and optional equipment and the configurations available for the different models, as described in this brochure, or according to the specific requirements of other markets may occur after 16/03/2020, the date when this brochure went to press. Your local BMW Partner is available to provide further details. Subject to change in design and equipment.

Of course, each vehicle is designed for economical recycling after its long-running life. You can find more information regarding your end-of-life vehicle on our website www.bmw.com.

© BMW AG, Munich, Germany.

Reproduction, even in part, only with the written approval of BMW AG, Munich.

411 005 170 20 2 2020 CB. Printed in Germany 2020.