

## **Vehicle-to-Load (V2L) Adapter**

**INSTRUCTIONS FOR USE.  
ORIGINAL BMW ACCESSORIES.**





# Vehicle-to-Load (V2L) Adapter

## Instructions for use

### Contents

1 Warnings, cautions and notes	4
2 Description and overview	6
3 Interface standards	8
4 Operation	13
5 Maintenance	14
6 Technical data	15

# 1 Warnings, cautions and notes



This manual contains important instructions for the two models Vehicle-to-Load (V2L) Adapter that shall be followed during use and maintenance of the adapter. When using electric products, the following basic precautions must always be followed.

- a. Read all instructions before using this product.
- b. Do not put fingers into the adapter.
- c. Do not use this product if the vehicle connector, vehicle inlet or the adapter itself has broken insulation, broken or cracked housing or if internal parts are accessible, including the wiring.
- d. Use of the adapter in these situations could result in unsafe conditions such as fire, water, or exposure of high voltage. ◀



Read this document carefully before using your Vehicle-to-Load (V2L) Adapter. Failure to follow any of the instructions or warnings in this document can result in fire, electrocution, serious injury or death. ◀



Indicates a hazardous situation which, if not avoided, could result in death or serious injury. ◀



Do not use this device if it is damaged in any way.



Do not disassemble/repair/modify this device.



Do not use extension cords with this device.



Do not use this device in wet conditions. Do not handle this device with wet hands. ◀



Do not use the Vehicle-to-Load (V2L) Adapter to charge the car. The adapter is only feasible for discharging.



Do not step on this device. Do not let vehicles run over the device.



Avoid direct sunlight and high temperatures. ◀



The surface of the adapter can be hot.



Handle the device carefully. Improper use may cause permanent or temporary injuries.



Operate the device within a temperature range from  
-40°F to + 122°F (-40°C to +50°C).



Check

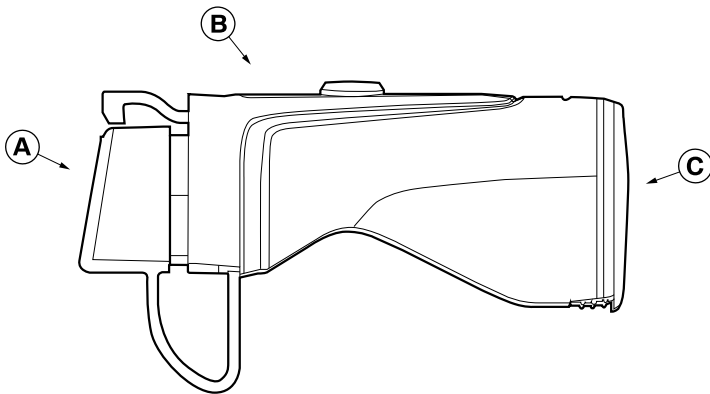
Use only equipment suitable for the voltage/amperage of the adapter. ◀

## 2 Description and overview

### Description

The BMW Vehicle-to-Load (V2L) Adapter is a connector between the electrical device and the electric vehicle.

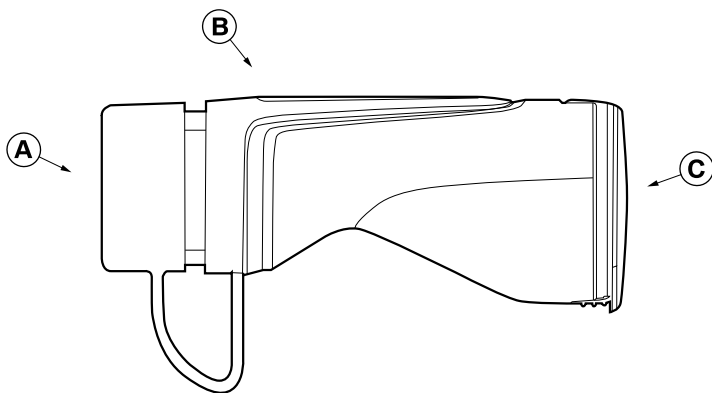
### Overview



**A** Type 1 vehicle inlet side

**B** Adapter

**C** Type F socket side



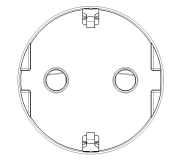
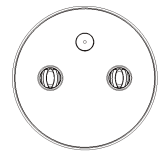
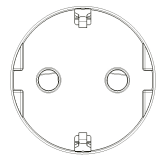
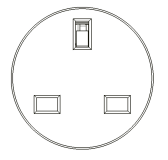
- A** Type 2 vehicle inlet side
- B** Adapter
- C** Type E/F/G socket side

### 3 Interface standards

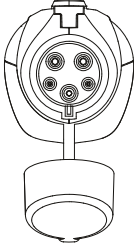
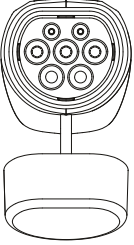
#### Infrastructure connector

Name	Part number
V2L-1-F BMW	5B904E7
V2L-2-F BMW	5B92130
V2L-2-E BMW	5B904E9
V2L-2-G BMW	5B904F0

#### Infrastructure side

Socket Type	Type 1-F	Type 2-E	Type 2-F	Type 2-G
				
Max. voltage	220 V	230 V	220 V – 230 V	220 V - 240 V
Max. power	3.5 kW	3.7 kW	3.5 kW – 3.7 kW	2.2 kW – 2.4 kW

## Vehicle connector

<b>Connector interface</b>	
 <p data-bbox="277 561 344 587">Type 1</p>	 <p data-bbox="752 561 819 587">Type 2</p>

## Country List

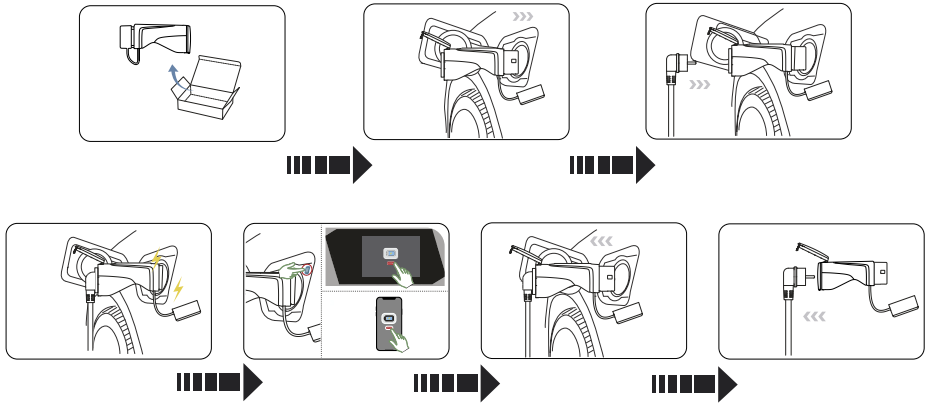
	<b>V2L-1-F BMW 5B904E</b>	<b>V2L-2-F BMW 5B92130</b>	<b>V2L-2-E BMW 5B904E9</b>	<b>V2L-2-G BMW 5B904F0</b>
Albania		X		
Andorra		X		
Austria		X		
Belarus		X		
Belgium			X	
Bosnia and Herzegovina		X		
Bulgaria		X		
Croatia		X		
Cyprus				X
Czech Republic			X	
Estonia		X		
Finland		X		
France			X	
Germany		X		
Greece		X		
Hong Kong				X
Hungary		X		
Iceland		X		
Ireland				X
Kosovo		X		

	<b>V2L-1-F BMW 5B904E</b>	<b>V2L-2-F BMW 5B92130</b>	<b>V2L-2-E BMW 5B904E9</b>	<b>V2L-2-G BMW 5B904F0</b>
Latvia		X		
Lithuania		X		
Luxembourg		X		
Malaysia				X
Moldova		X		
Montenegro		X		
Netherlands		X		
North Macedonia		X		
Norway		X		
Poland			X	
Portugal		X		
Romania		X		
Saudi Arabia				X
Serbia		X		
Singapore				X
Slovakia			X	
Slovenia		X		
South Korea	X			
Spain		X		
Sweden		X		
Turkey		X		
Ukraine		X		

	<b>V2L-1-F BMW 5B904E</b>	<b>V2L-2-F BMW 5B92130</b>	<b>V2L-2-E BMW 5B904E9</b>	<b>V2L-2-G BMW 5B904F0</b>
United Arab Emirates				X
United Kingdom				X

## 4 Operation

Please follow the steps below to use the adapter for powering external devices.



### Deactivating the adapter

Before removing the adapter, you must select one of the following three methods to unlock and disconnect the Vehicle-to-Load (V2L) Adapter:

1. Button on the charging socket.
2. Touchscreen inside the car.
3. Mobile phone app.

## 5 Maintenance



### **Warning!**

Clean the adapter only when it is fully disconnected from the power supply and the vehicle. ◀

### 5.1 Fault descriptions

Fault: Unable to supply power after the adapter is connected.

Solution:

1. Check whether the connection of the adapter to the electrical device or the vehicle is loose.
2. Disconnect the adapter from the vehicle and the electrical device.
3. Connect the adapter first to the electrical device, then to the vehicle.
4. Check the vehicle charging state.

## 6 Technical data

### Electrical data

Variant	Part number	Rated current	Rated voltage	Frequency
V2L-1-F	5B904E7	15 A	220 V	60 Hz
V2L-2-F	5B92130	16 A	220 - 230 V	50 Hz
V2L-2-E	5B904E9	16 A	230 V	50 Hz
V2L-2-G	5B904F0	10 A	220 - 240 V	50 - 60 Hz

### Mechanical data

	Type 1	Type 2
Length	196 mm	190 mm
Width	72 mm	72 mm
Height	112 mm	107 mm
Weight	0.6 kg	0.6 kg

### Ambient conditions

Operating temperature range	-40°F to + 122°F (-40°C to +50°C)
Storage temperature range	-40°F to + 158°F (-40°C to +70°C)
Humidity	2% to 95%
IP protection class	IP 54 (Dust cover fully closed) IP 20 (Usage status)



**RACCOLTA CARTA**  
Verifica le disposizioni  
del tuo Comune.